



TRIVOLT
industries

Electrical Heaters and Sensors | www.TRI-VOLT.com

TriVolt Industries is a supplier of electrical heaters and sensors. We service different types of markets, from injection molding and extrusion, packaging, pressure and blow molding, rubber extrusion, mold makers, chemical, food, rail and more.

At TriVolt Industries, we believe in working in partnership with our customers, matching our expertise and depth of knowledge to your needs. The Moisture Proof Strip Heaters we developed specially for the rail industry is a perfect example of the types of challenges we look forward to. We ensure the highest quality heaters and stand behind our products with a superior level of before-and-after sales service. We have implemented a successful "SOS Service", a 24-72 hour service we offer our customers in urgent cases. Quality, innovation and customer service is our primary focus.

Quality Assurance: We ensure a stringent internal quality process that guarantees a reliable product is delivered to our customers every time. Each heater undergoes a variety of testing maximizing efficiency and successful usage. All our products are presently CSA and NRTCUL approved and CE certified. Our customer base has benefited from this applied quality process by having on-time deliveries and avoiding down time. TriVolt Industries is committed to best serve your market needs.



Mica Band Heater and Mica Strip Heater

- Mica construction
- Stainless steel and satin coat metal
- Up to 40 WPSI
- Maximum operating temperature 800 ° F
- HT – 950 ° F



High Performance Heater

- Ceramic tape construction
- Stainless steel sheet metal
- Up to 65 WPSI
- Maximum operating temperature 1300 ° F



Power Band Heater

- Maximum operating temperature 1300 ° F
- Stainless steel construction
- Also available fully sealed
- Up to 100 WPSI



Ceramic Band Heater

- Ceramic construction
- Stainless steel sheet metal
- Up to 45 WPSI
- Maximum operation temperature 950 ° F
- HT – 1200 ° F



Moisture Proof Band Heater

- Mica construction
- Brass or stainless steel
- Up to 35 WPSI
- Maximum operating temperature 800 ° F



SSH Strip Heater

- Ceramic tape construction
- Stainless steel sheet metal
- Up to 30 WPSI
- Maximum length 60" / Maximum width 5"
- Maximum operating temperature 800 ° F



Channel Strip Heater

Ceramic construction

Steel tube with nickel, black oxide, hot galvanized or black galvanized treatment

Up to 35 WPSI

Maximum length 60" / 1.5" wide

Maximum operating temperature 800 ° F



Moisture Proof Strip Heater

Mica or ceramic construction / Fully sealed

Steel tube with nickel, black oxide, hot galvanized or black galvanized treatment

Up to 30 WPSI

Maximum length 60" / 1.5" wide

Maximum operating temperature 800 ° F



Plate Heaters

Available in aluminum and stainless steel

Available for water proof applications

Up to 35 WPSI

Maximum operating temperature 850 ° F



Sensors

Types J and K available

Armour and stainless steel shield

All adaptors are available

Silver brazed tip at 2642 ° F



Triflex Heater

Stainless steel sheet and tubular construction

All diameter and widths available

Up to 35 WPSI

Moisture proof is available

Maximum operating, temperature 850 ° F



Cartridge Heater

Stainless steel tube

Magnesia powder and ceramic core

Low, medium, and high density available

Up to 322 WPSI

Maximum operating temperature 1472 ° F



Coil Heater

304 stainless steel tube

Heavily compressed Magnesium Oxide

Cross section 3.7mm round; 3.3 x 3.3" square; 4.5 x 2.5" rectangular

Melting temperature 2552 ° F



Tubular Heaters and Fin Tubular

Stainless steel, copper or incoloy tubing

High temperature compacted MGO

Sizes in diameter 1/4; 5/16; 7/16; 31/64" and metric also available

Different shapes available in all diameters



Bushing Heater

Element material: stainless steel, copper or incoloy

Up to 3" NPT brass or stainless steel bushing

Nema 4 and Nema 7 housing

All heaters are pressure tested

Built-in thermostat and sensor available

TRIVOLT

industries



Immersion Heater Flange

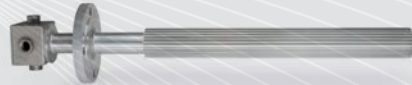
Element material: stainless steel, copper or incoloy

Maximum 14" flange in steel & stainless steel

Nema 4 and Nema 7 housing

Up to 300 PSI pressure

Built-in thermostat and sensor available



Aluma Finned Immersion Heater

Available in aluminum (T-6360), standard carbon steel & stainless steel

Low watt density surface

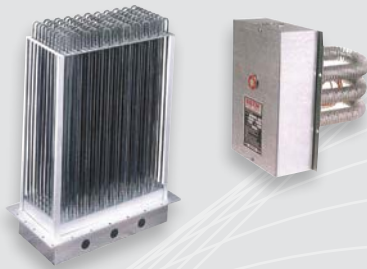


Systems

Control panel with Circulation heaters

Control panel with Duct heaters

All special systems available



Duct Heater

Available in open coil and tubular style

All voltages and systems available

Complete with controls and contactors



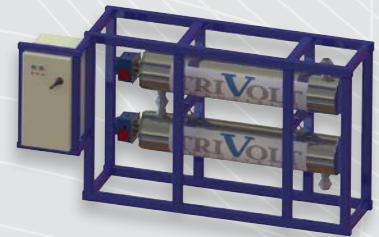
Control Panel

Temperature control panels

Temperature control panel with SCR switching

Different Nema enclosures available

Multiple zones



Circulation Heaters

Mounted on skid with control panel

ASME and CRN certification

Up To 600 LBS flange

1100 PSI

4491, des Grandes-Prairies
Montreal, QC Canada H1R 1A5

T 514-321-4460
F 514-321-4437

Toll-Free 1-866-321-4460
sales@tri-volt.com